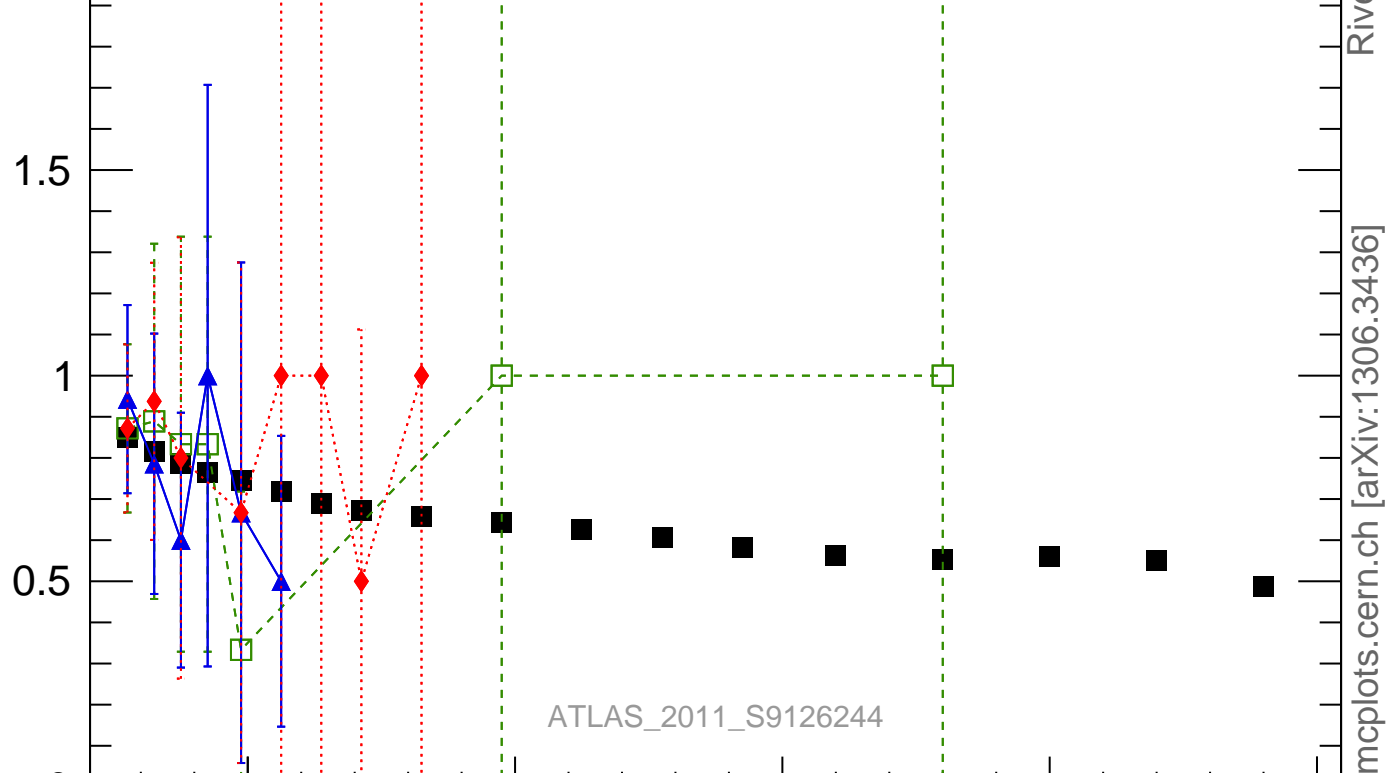


Gap fraction

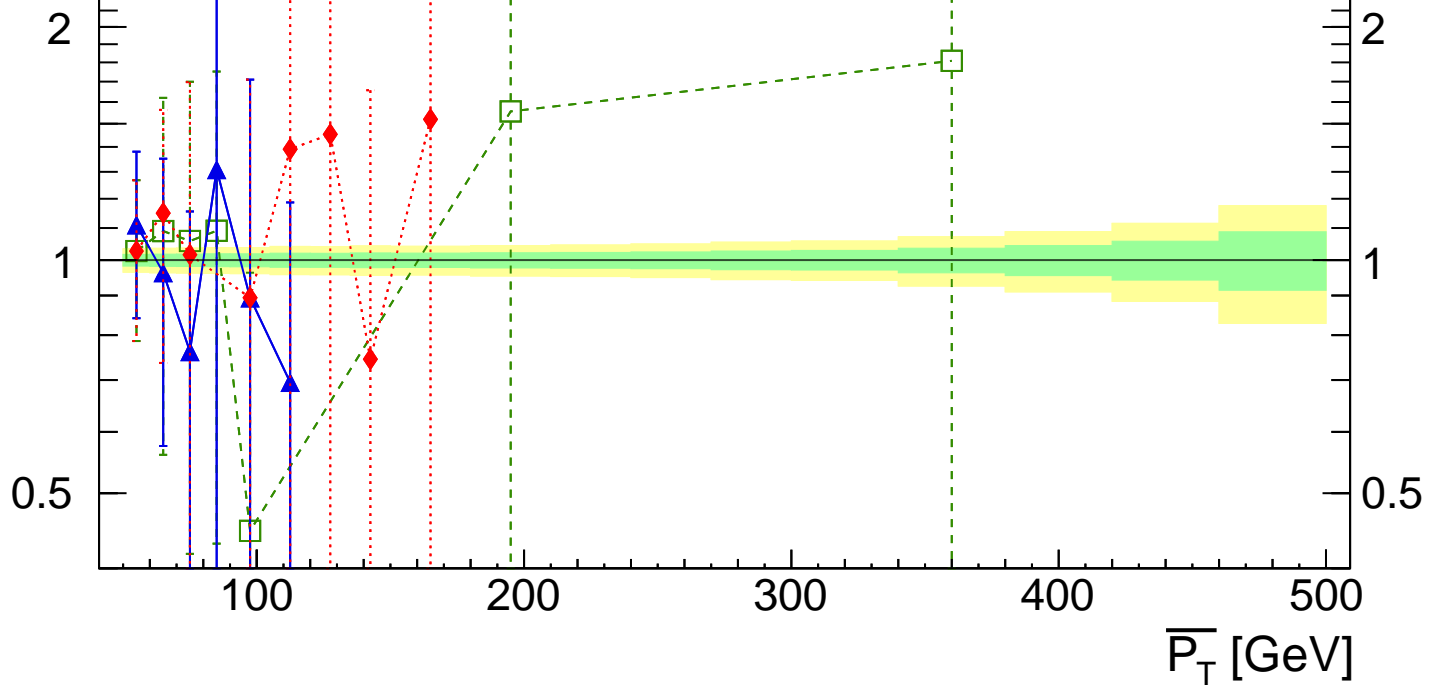
Gap fraction vs  $p_T(\text{LJ})$  ( $1 < \Delta y < 2$ )

- ATLAS
- Herwig 7.1.4 default
- ▲ Pythia 8.205 default
- ◆ Sherpa 2.2.8 default

Rivet 3.1.0,  $\geq 100k$  events

mcplots.cern.ch [arXiv:1306.3436]

Ratio to ATLAS



2

1

0.5

 $\overline{P_T}$  [GeV]