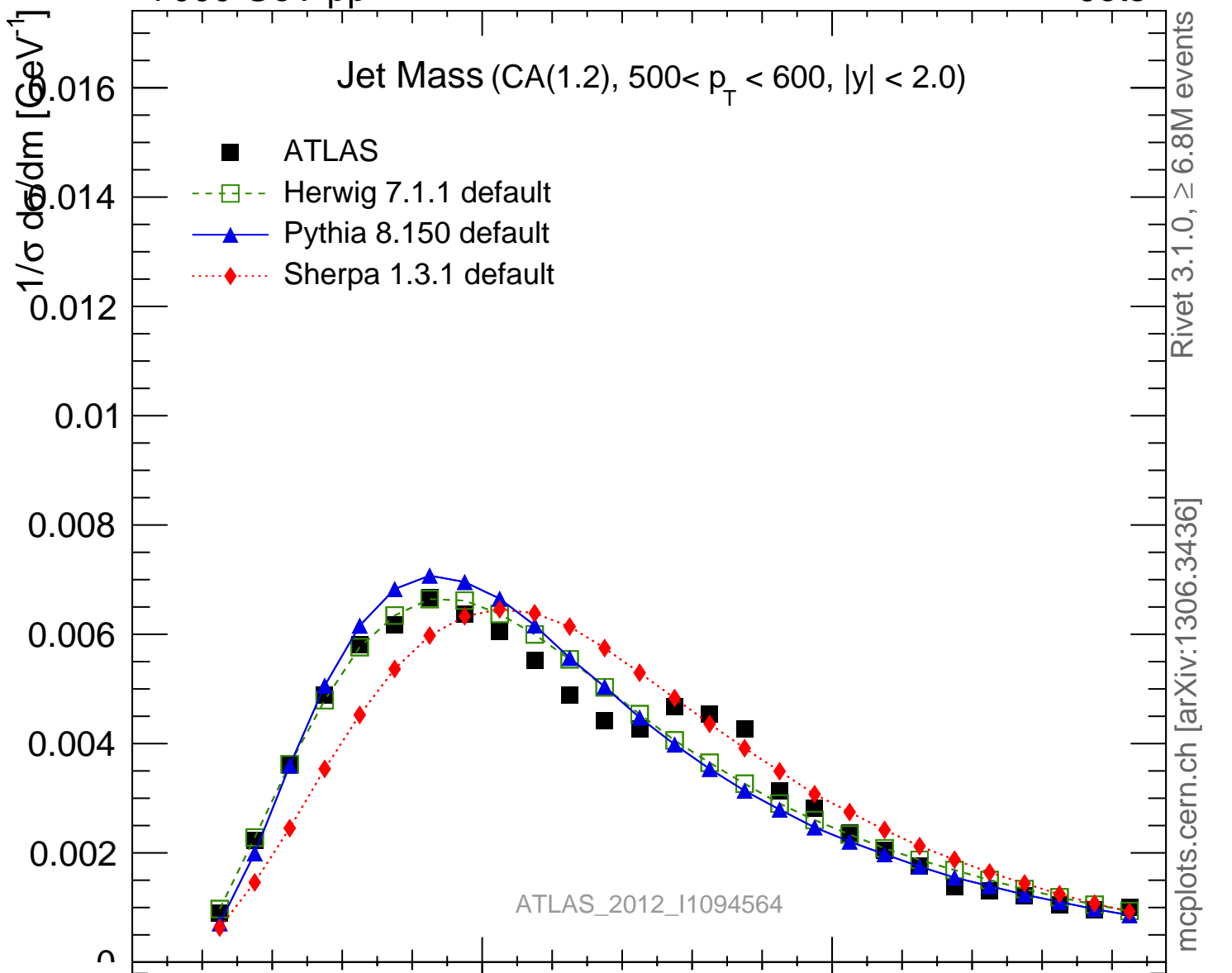


7000 GeV pp

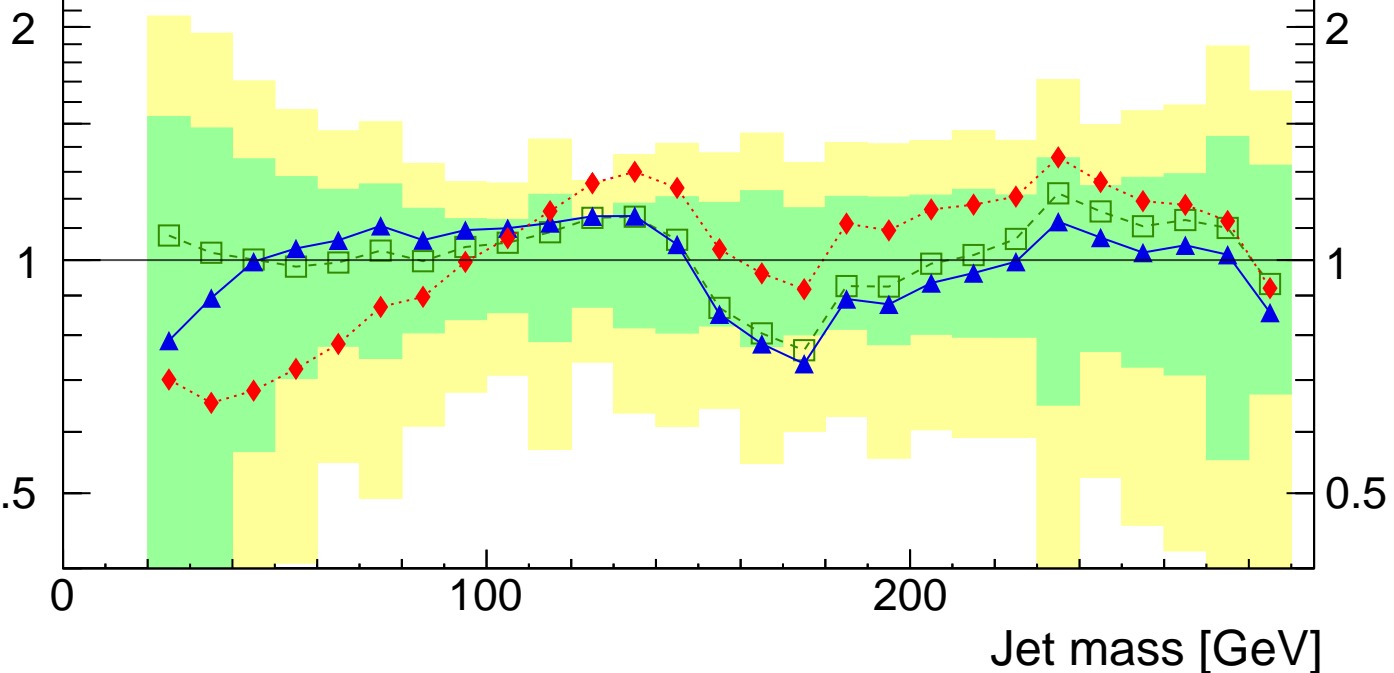
Jets

Jet Mass (CA(1.2), $500 < p_T < 600$, $|y| < 2.0$)

- ATLAS
- - □ Herwig 7.1.1 default
- - ▲ Pythia 8.150 default
- - ◆ Sherpa 1.3.1 default



Ratio to ATLAS



Jet mass [GeV]