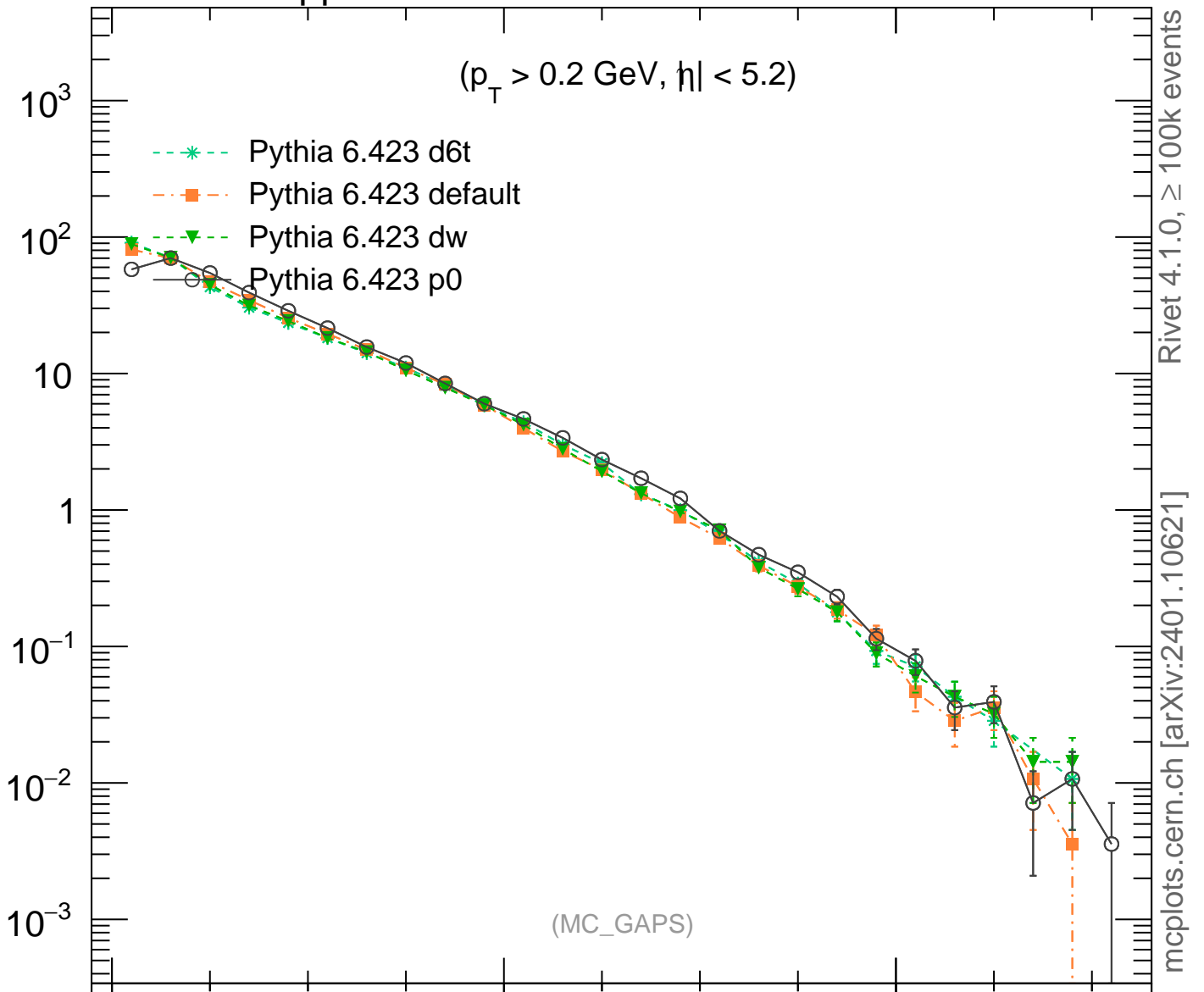


7000 GeV pp

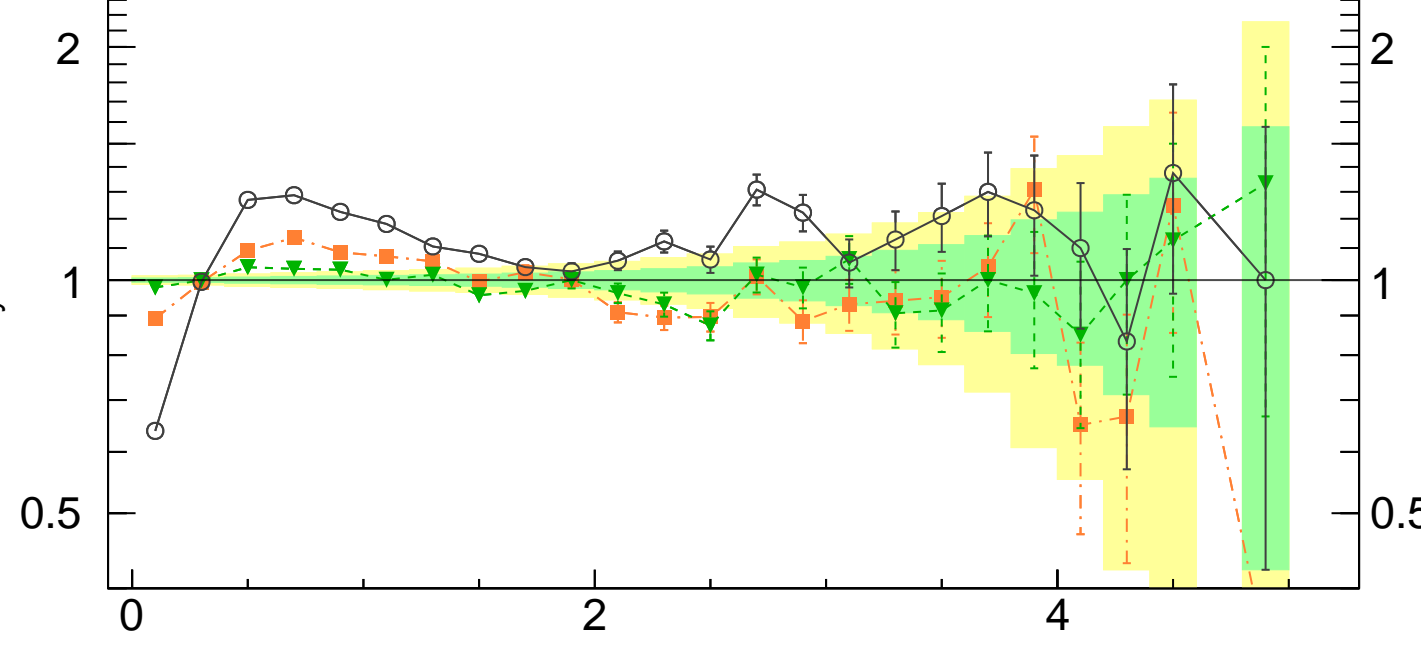
Soft QCD

$(p_T > 0.2 \text{ GeV}, |\eta| < 5.2)$

- Pythia 6.423 d6t
- Pythia 6.423 default
- Pythia 6.423 dw
- Pythia 6.423 p0



Ratio to Pythia 6.423 d6t



Rivet 4.1.0, $\geq 100k$ events
mcplots.cern.ch [arXiv:2401.10621]

2
1
0.5