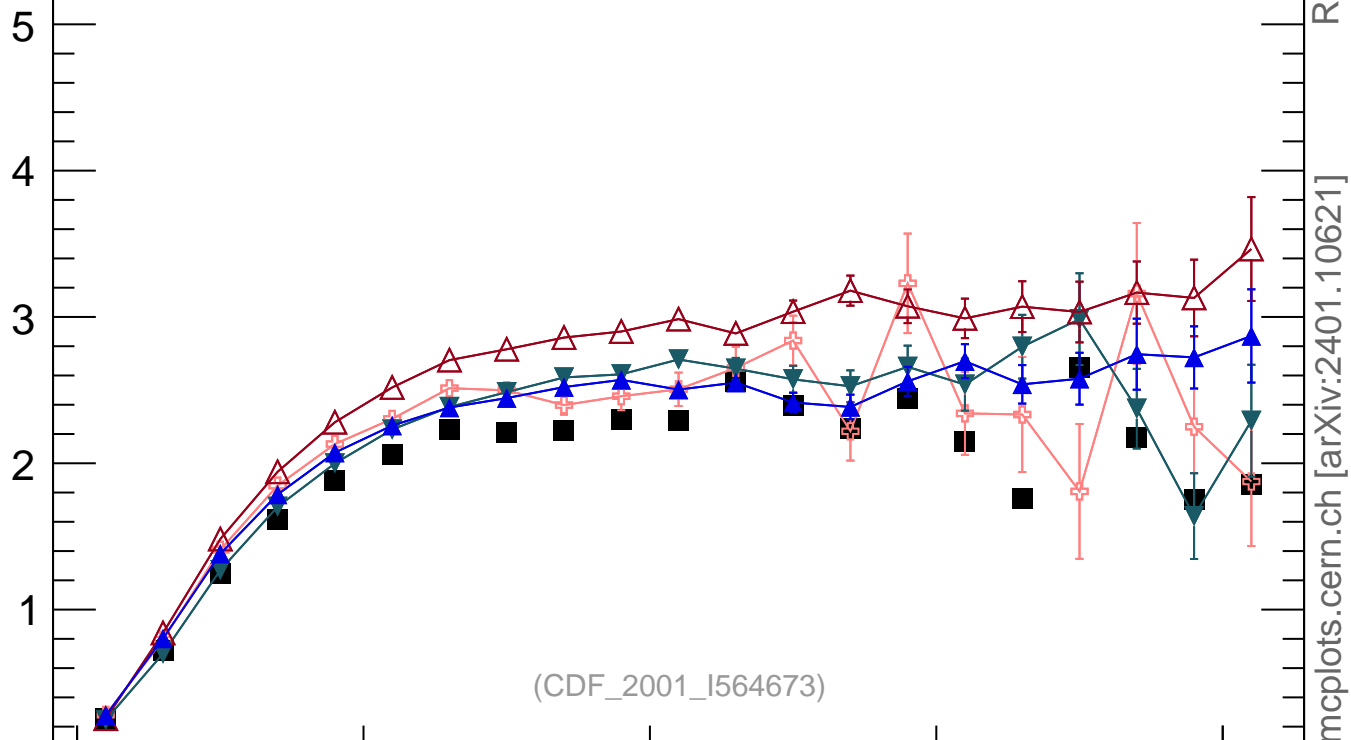


1800 GeV ppbar

Underlying Event

 $N_{ch}$  $N_{ch}$  (transverse) for min-bias

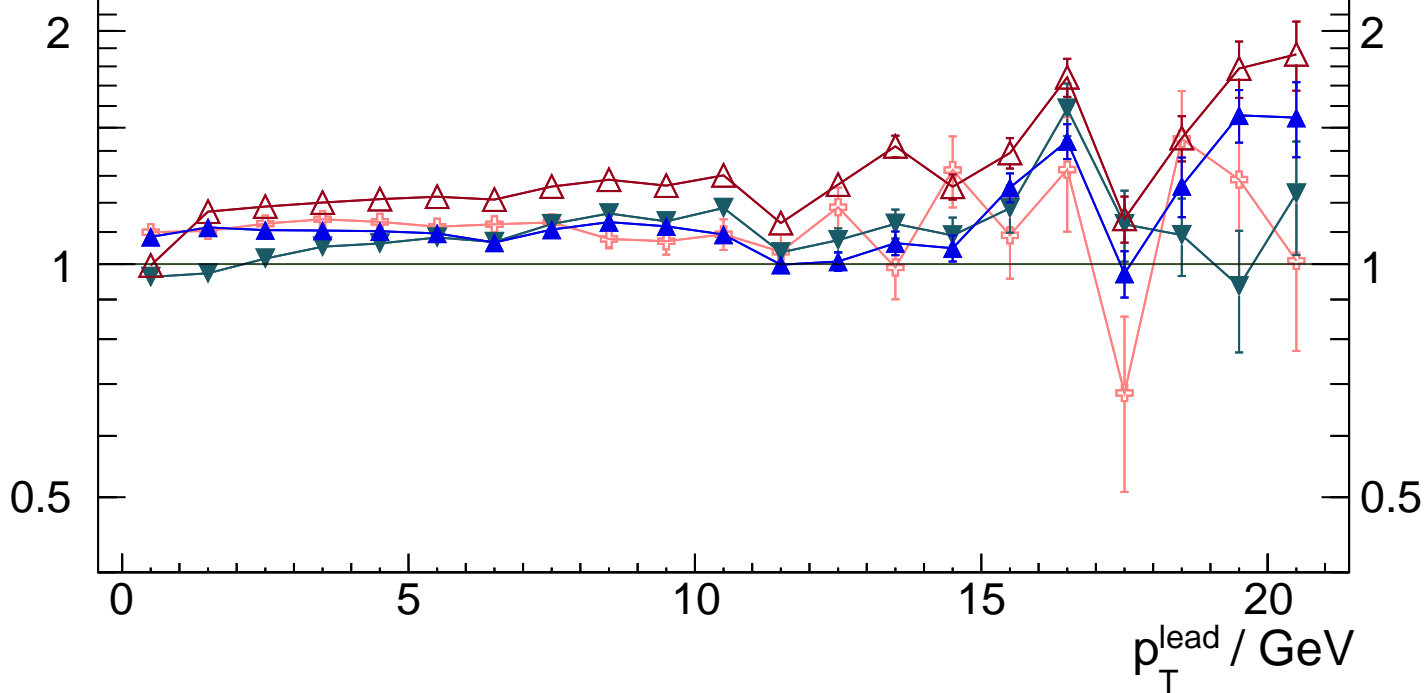
- CDF
- ⊕ Epos 1.99.crmc.1.3 lhc
- ▼ Herwig 7.2.1 softTune
- △ Pythia 6.428 370
- ▲ Pythia 8.315 default



Rivet 4.1.0, ≥ 800k events

mcplots.cern.ch [arXiv:2401.10621]

Ratio to CDF



2

1

0.5

 $p_T^{\text{lead}} / \text{GeV}$