

7000 GeV pp

Underlying Event

Sum( $p_T$ ) density wrt  $\eta$  of leading track (TRNS) ( $|\eta| < 2.5$ ,  $p_T > 0.1$  GeV)

- ATLAS
- Herwig++ 2.7.1 default
- Herwig 7.0.2 default
- ▲- Pythia 8.165 default
- ◆- Sherpa 1.2.3 default

Rivet 3.1.0,  $\geq 7$ M events

mcplots.cern.ch [arXiv:1306.3436]

ATLAS\_2010\_S8894728

 $\langle d^2 \text{sum } p_T / d\eta d\phi \rangle$  [GeV]

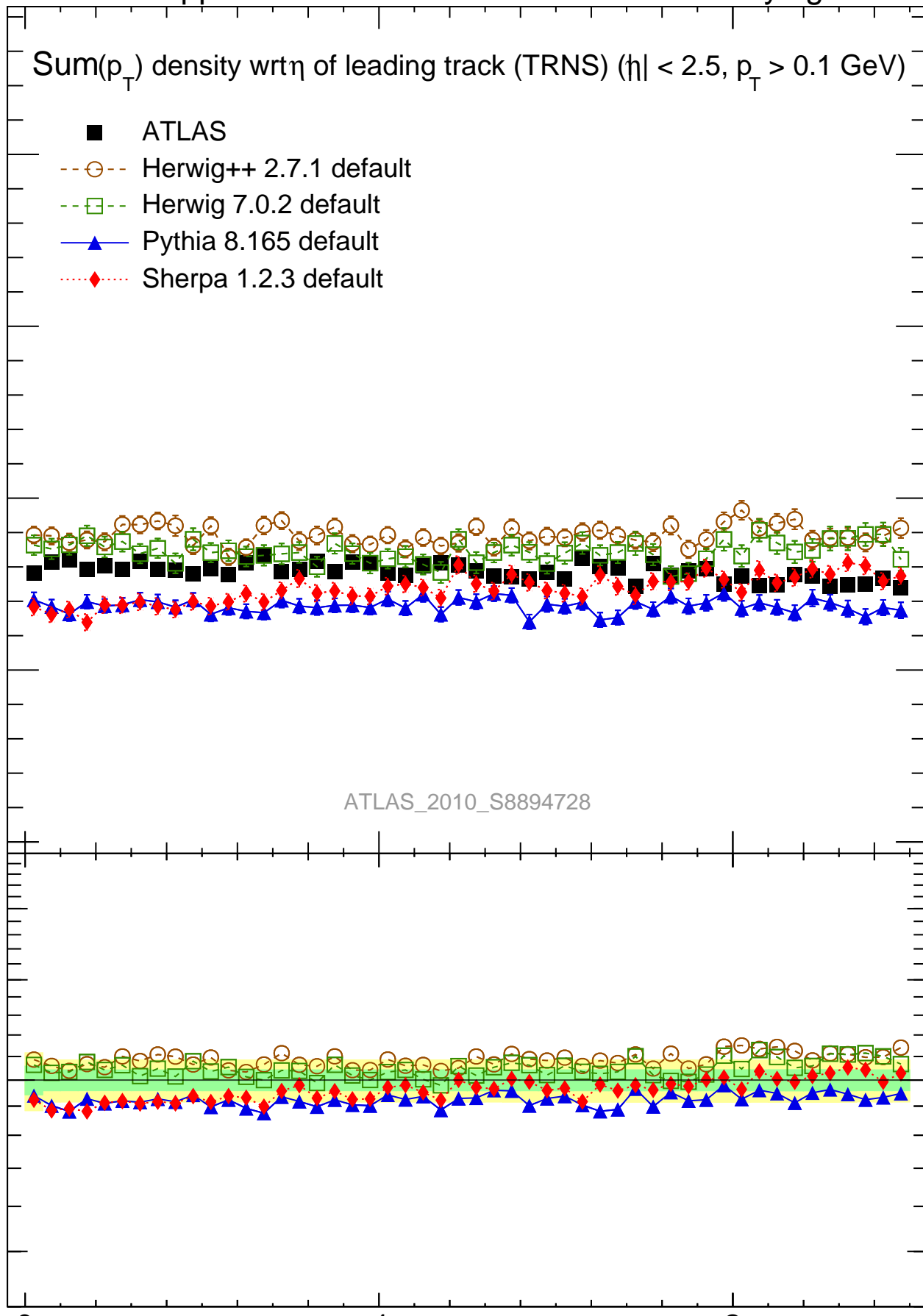
2.5

2

1.5

1

0.5



Ratio to ATLAS

2

1

0.5

2

1

0.5

0 1 2

$|\eta|$  (leading track)